

Housing and Social Policy: Connections and Challenges

*Karen Chapple, Ph.D.
Director of School of Cities and Professor of Geography
and Planning, University of Toronto
Professor Emerita, University of California at Berkeley*



Social Policy in Housing: Towards Integration

- Benefits of neighbourhood/urban integration
- **Past:** Planned and organic mixed-income communities in cities and suburbs
- **Present:** Threats from public-private urban regeneration
- **Future:** Challenge of future immigrant integration

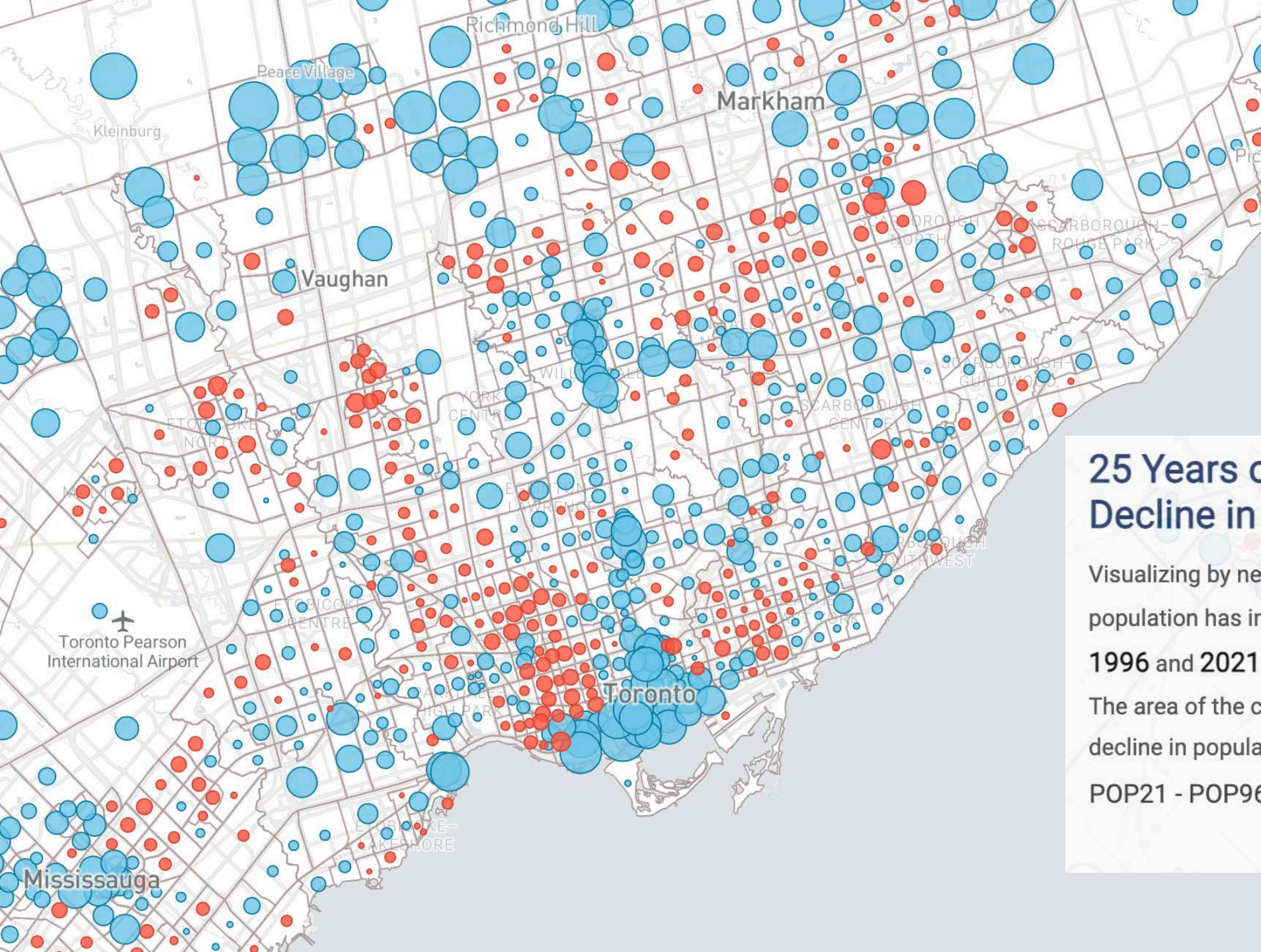
Benefits of Integration

- Health
- Crime
- Education
- Employment
- Upward mobility
- Civic and social capital
- Fiscal



Redevelopment: from social to mixed-income housing

(From left to right: Orchard Park in Boston, Regent Park in Toronto, Hunter's View in San Francisco)





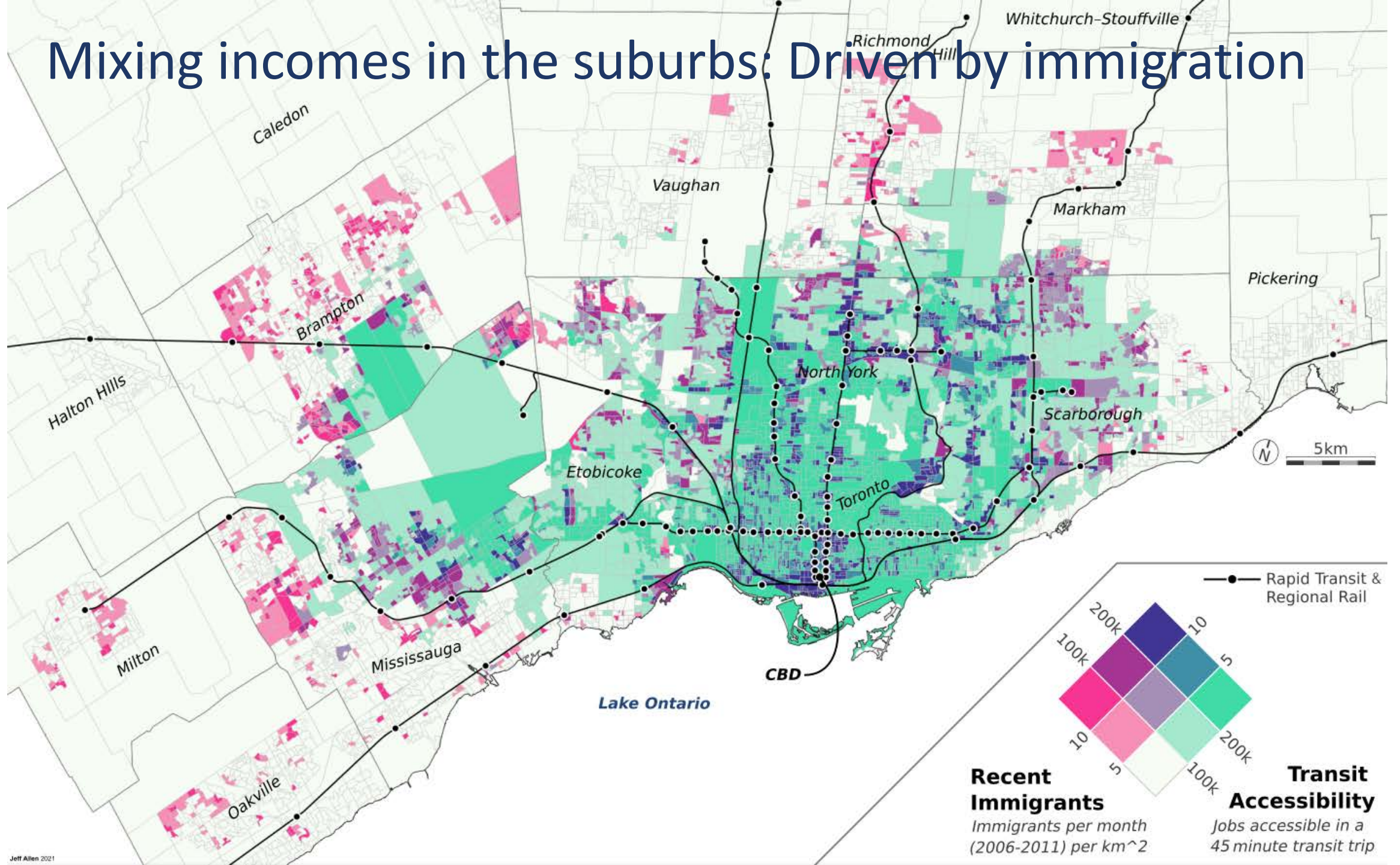
25 Years of Population Growth & Decline in Canadian Cities

Visualizing by neighbourhood census tracts how the population has increased  or decreased  between 1996 and 2021.

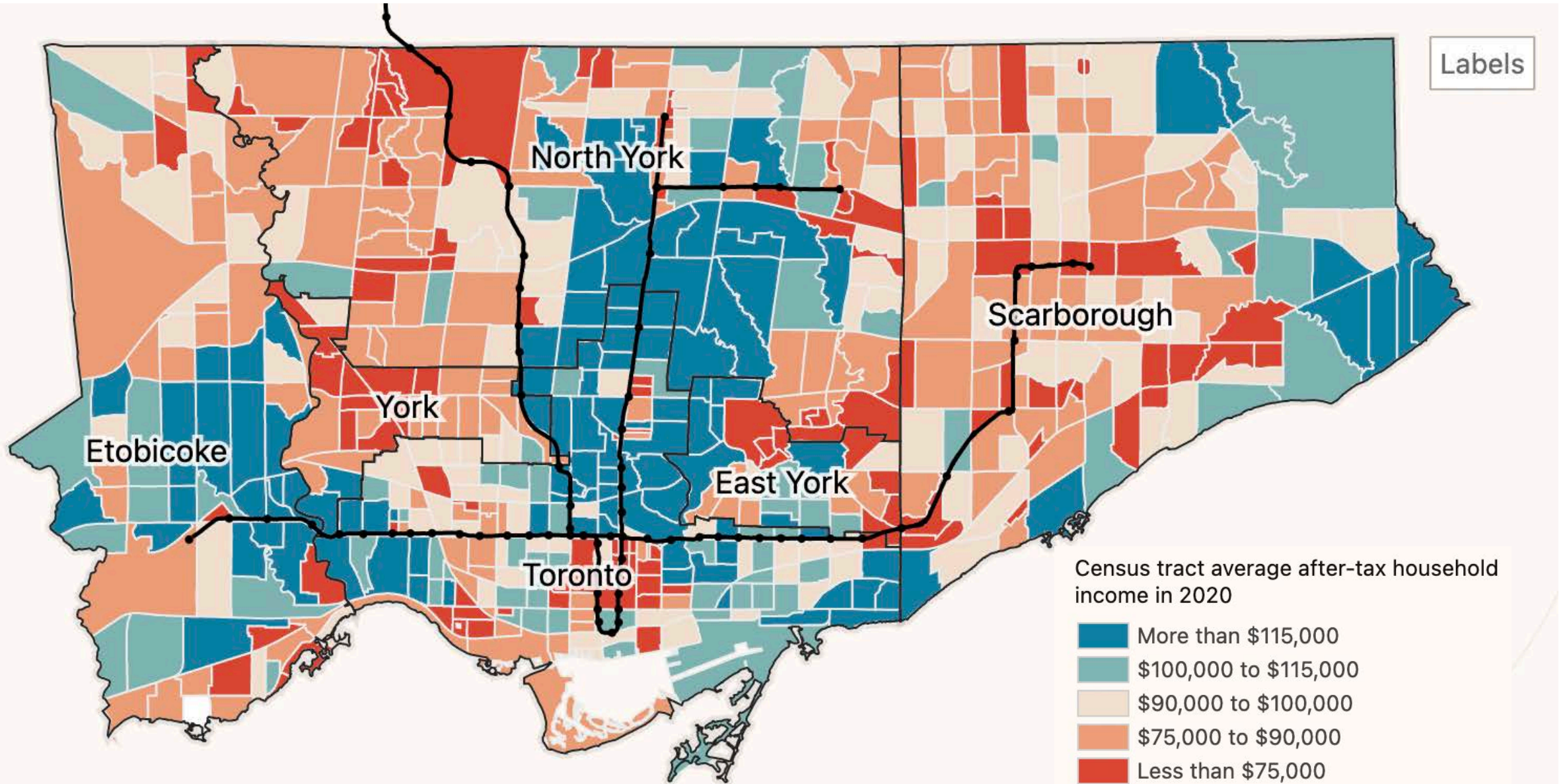
The area of the circles are proportional to the growth or decline in population in each neighbourhood:



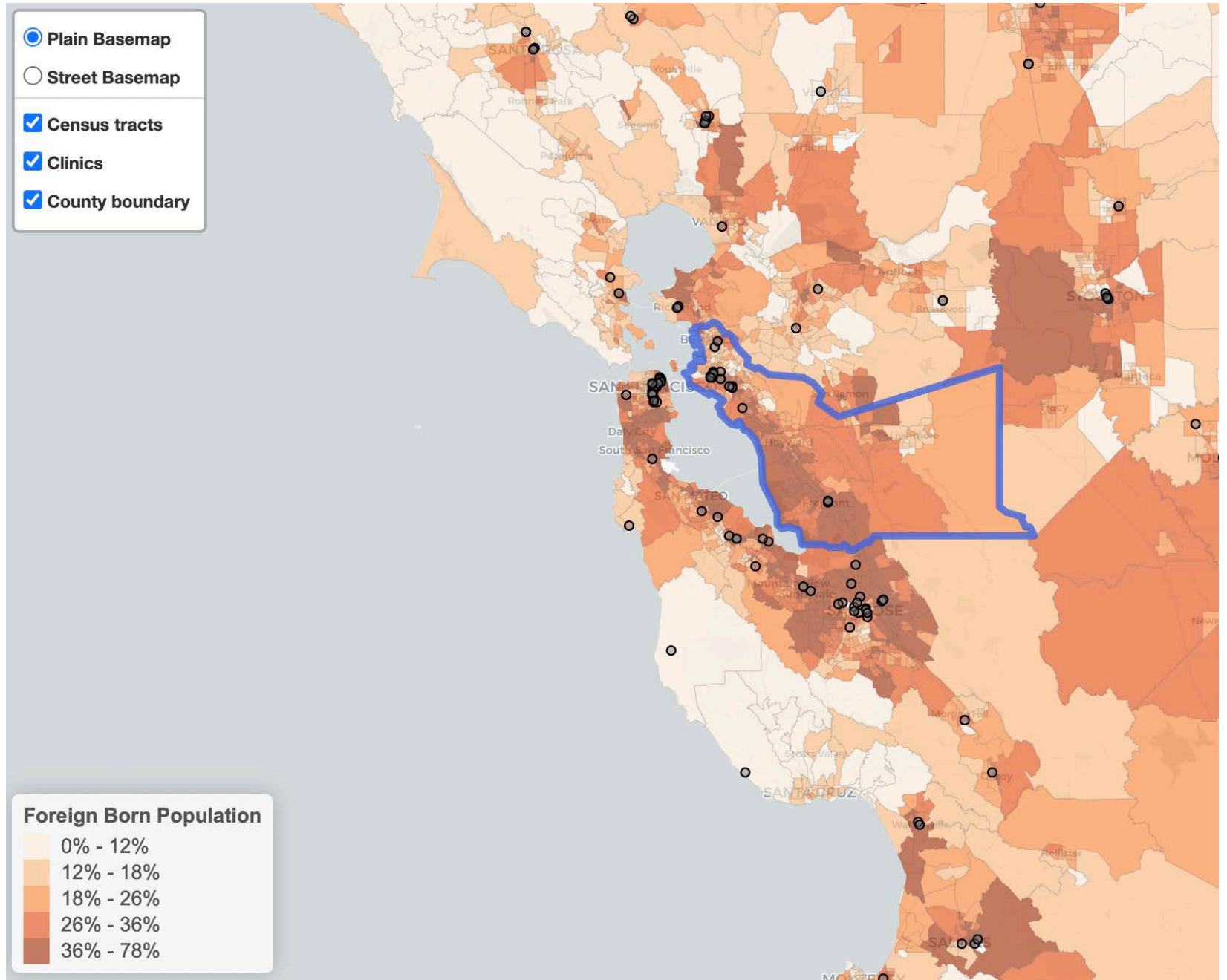
Mixing incomes in the suburbs: Driven by immigration



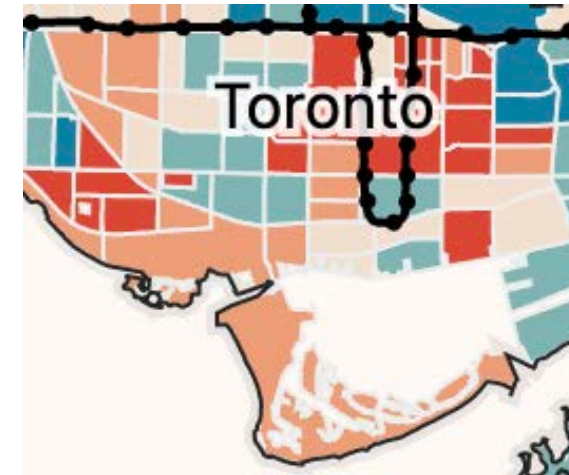
And increasingly low-income (2020)



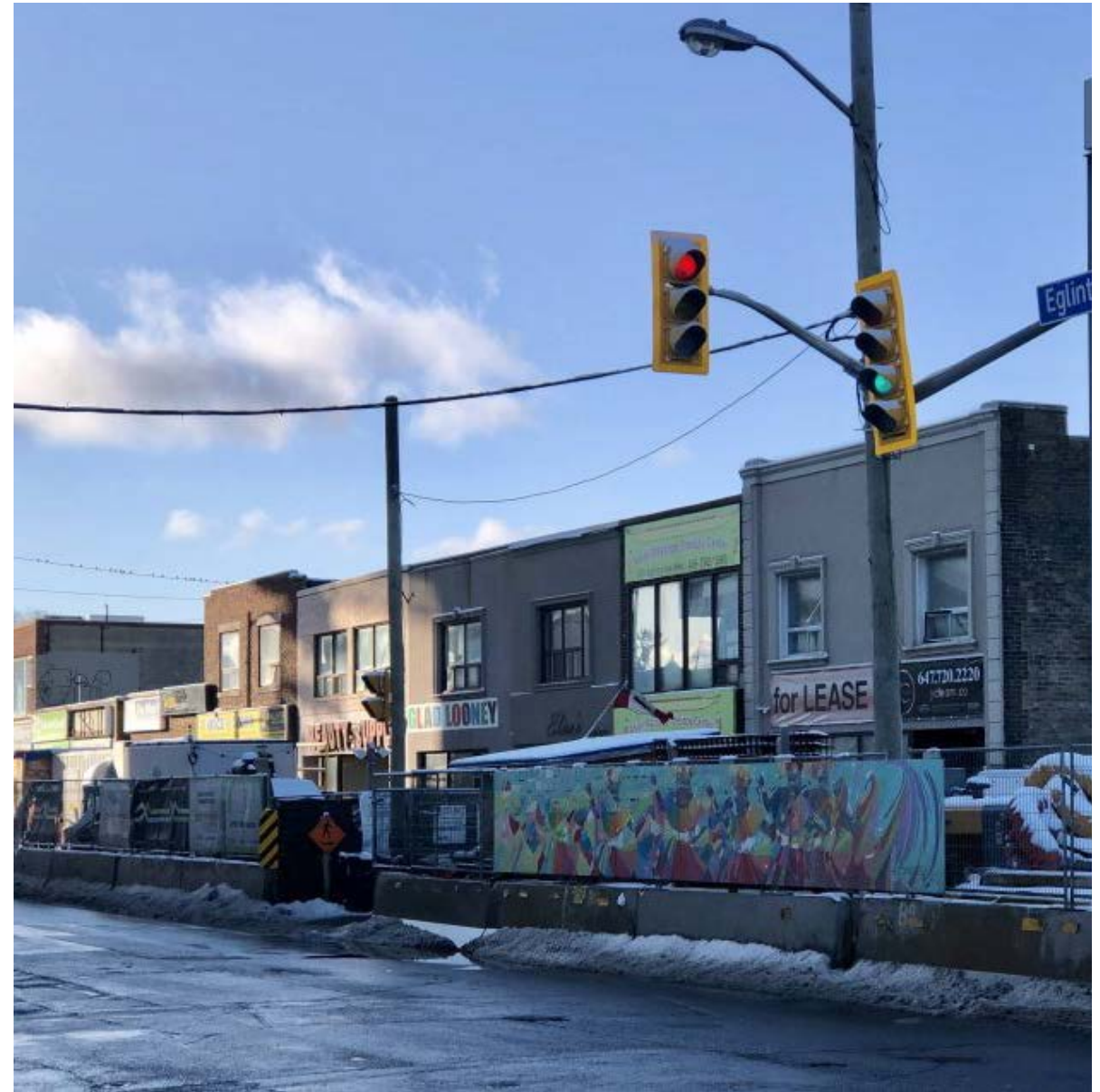
Berkeley Interdisciplinary Migration Initiative: Legal Clinics and Foreign-Born Population in San Francisco



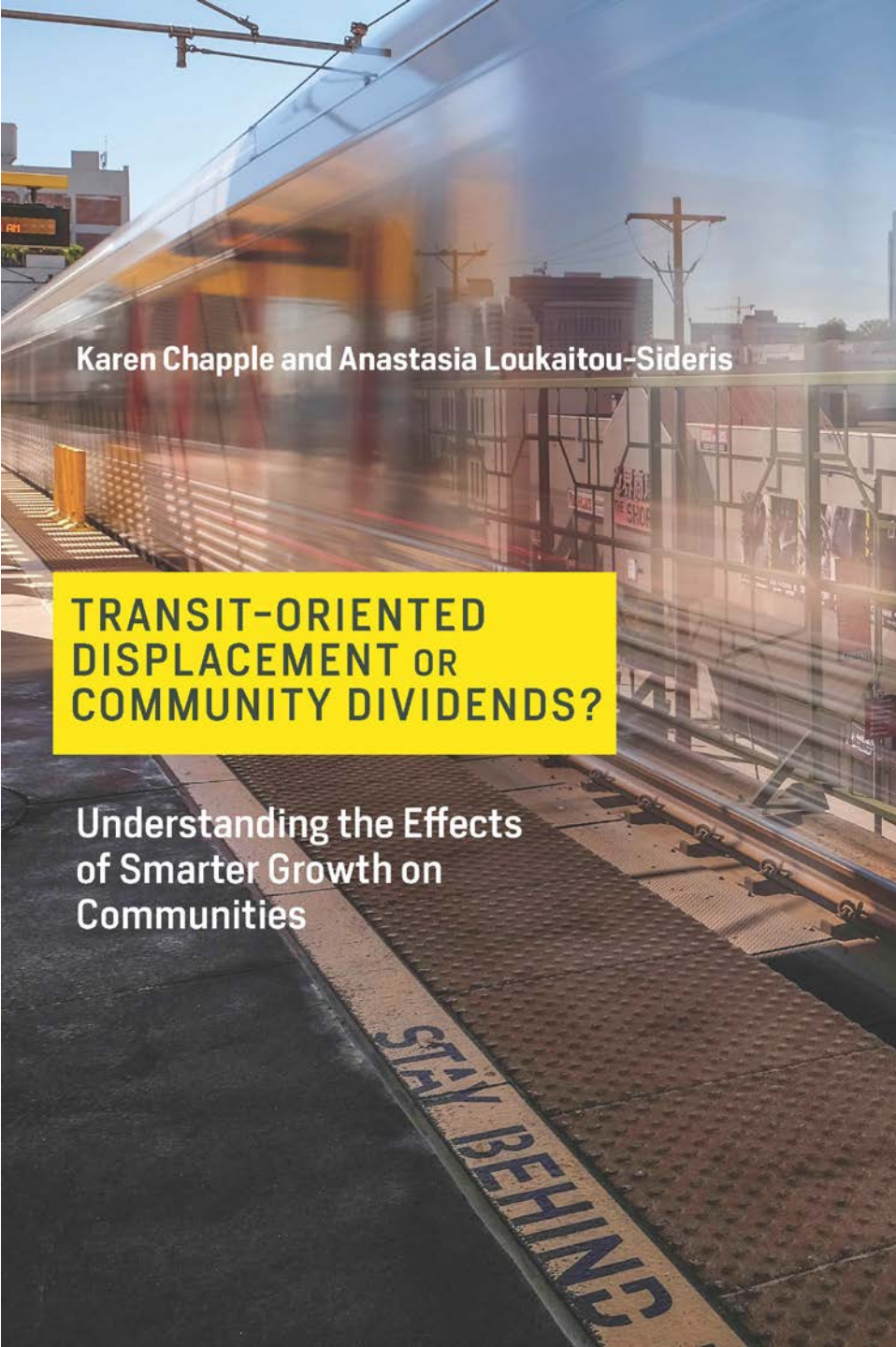
Current threats to integration: Public-private urban regeneration



Metrolinx Toronto Transit Expansion



Available for FREE
download at
www.mitpress.edu

A blurred high-speed train in motion at a station platform. The train is moving from left to right, creating a sense of speed. The platform has a safety fence and a "STAY BEHIND" sign. The background shows city buildings and utility poles.

Karen Chapple and Anastasia Loukaitou-Sideris

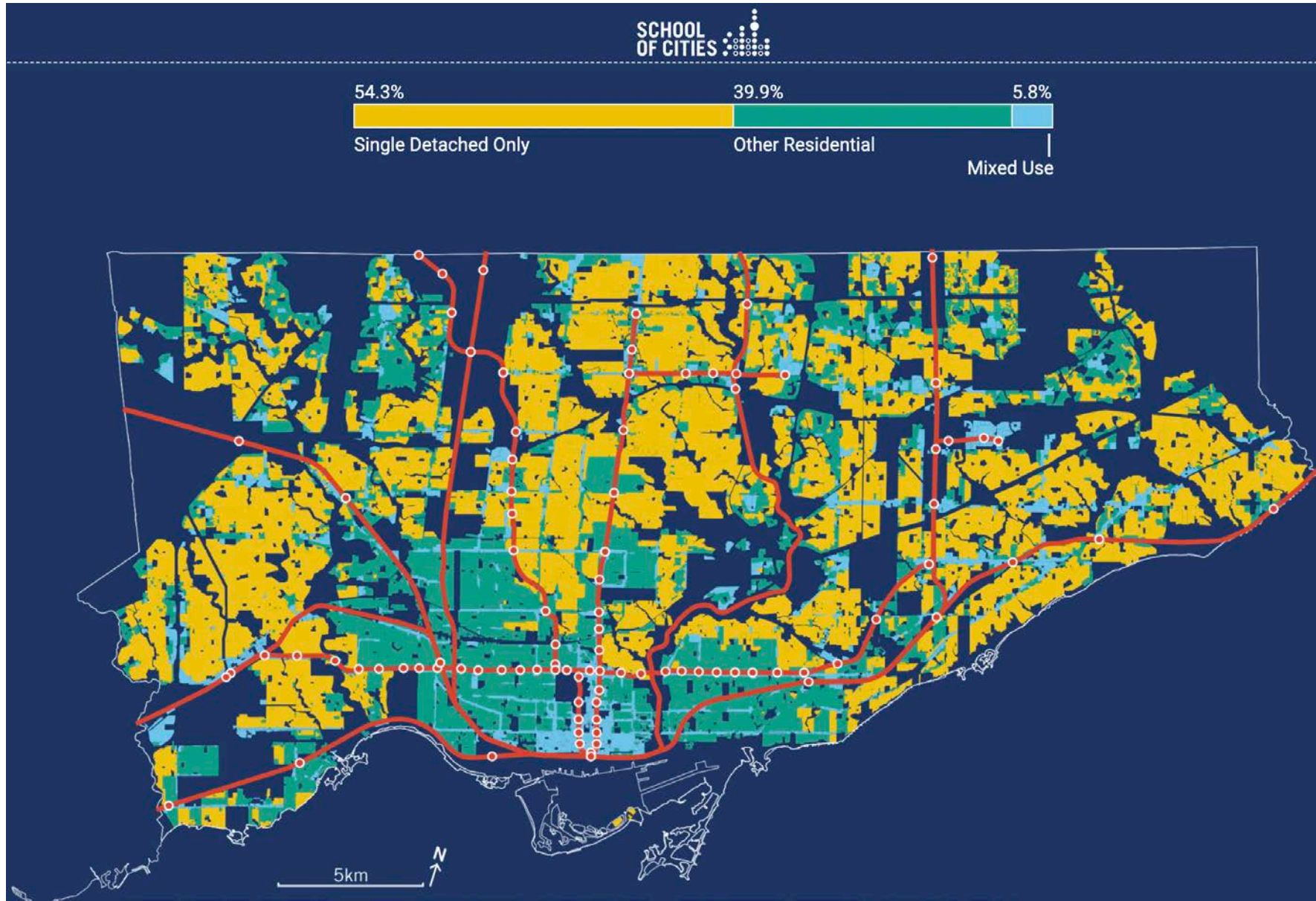
**TRANSIT-ORIENTED
DISPLACEMENT OR
COMMUNITY DIVIDENDS?**

Understanding the Effects
of Smarter Growth on
Communities

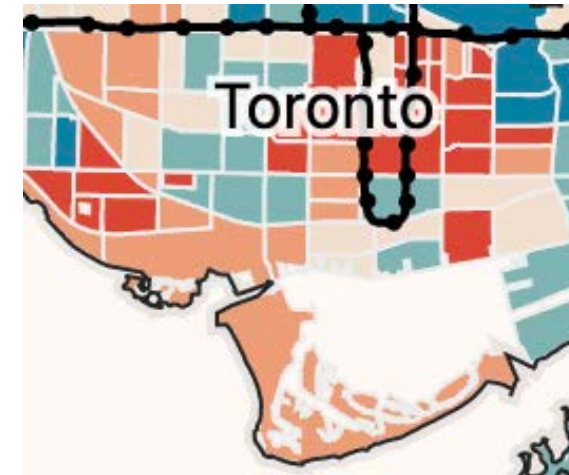
STAY BEHIND

Future: Integration via Immigrants

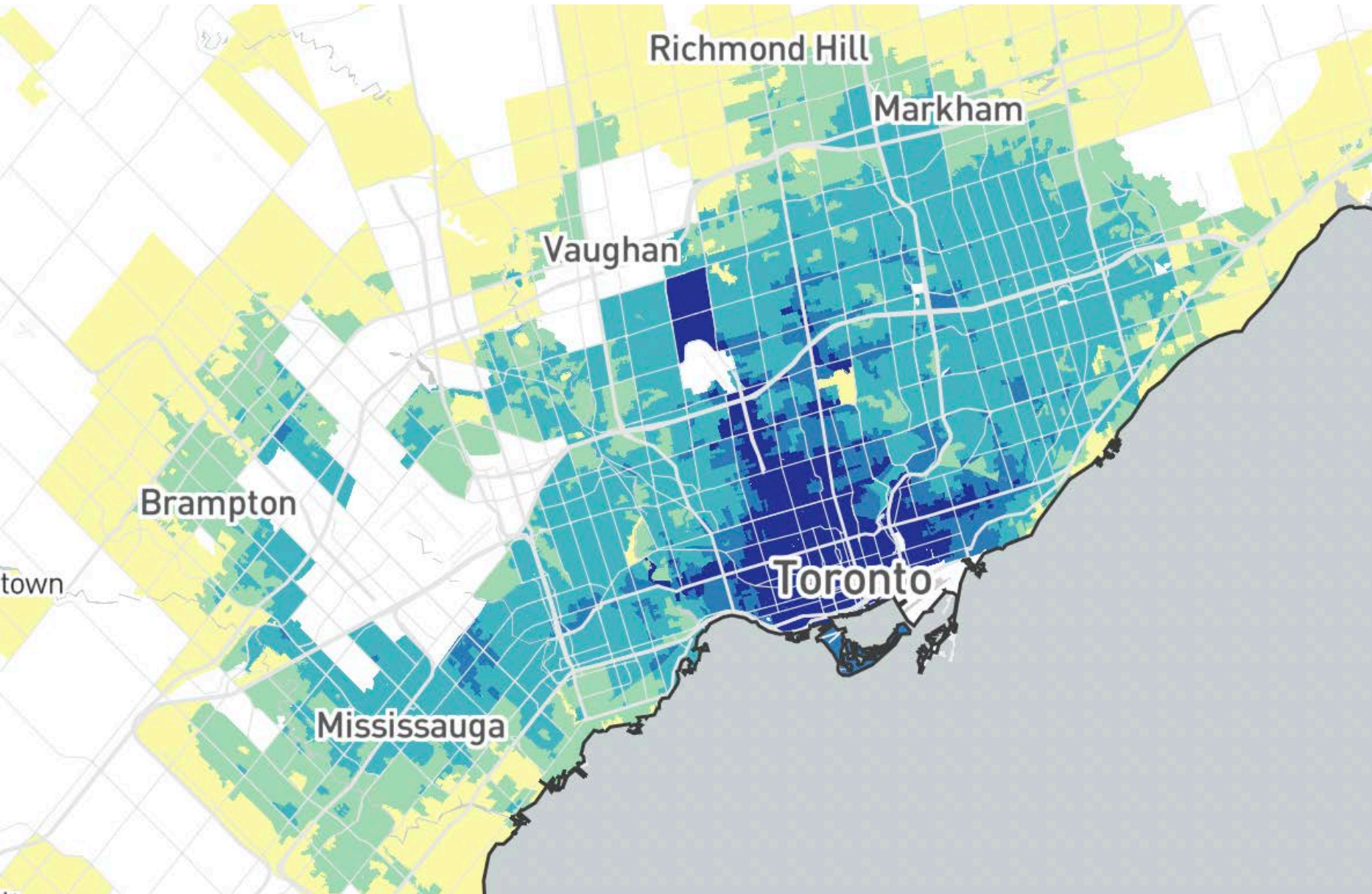
But do we have the space?



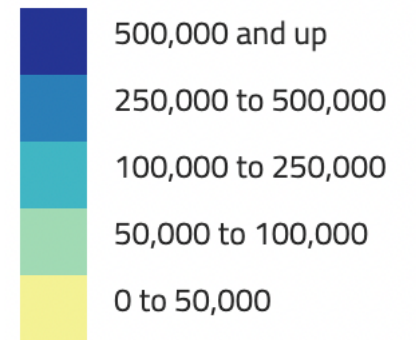
And will market-led housing development be affordable?



If the space is in the suburbs, where are the jobs and amenities?



Number of jobs reachable within 45 minutes



Housing as Social Policy: Lessons Learned

- Providing housing – by supporting integration in high-opportunity neighbourhoods – helps us tackle some social policy issues.
- Policymaking and program delivery must cross silos (e.g., transportation, housing, and health)
- To link housing and social policy, need more creative cross-sectoral collaboration.